

StabilEyes

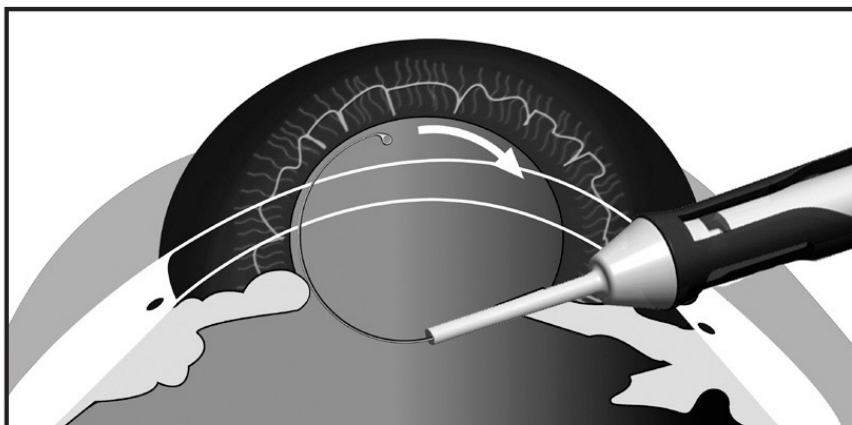
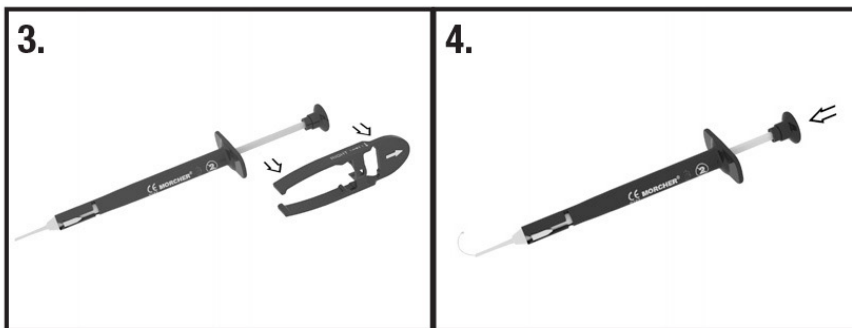
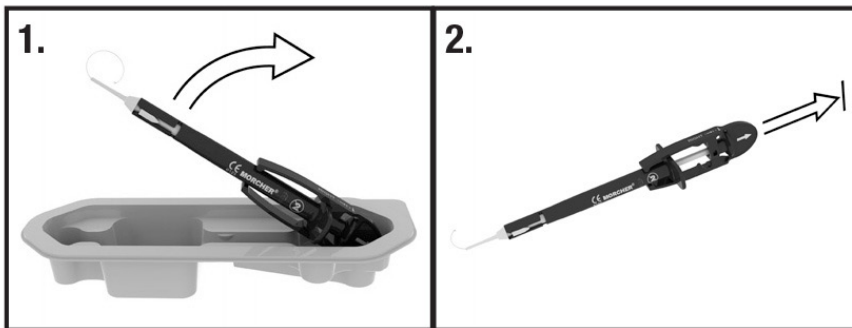
Capsular Tension Ring



The Johnson & Johnson Vision StabilEyes Preloaded Capsular Tension Ring (CTR) comes in a single-use injector.

Johnson & Johnson Vision CTRs are sterile, non-optical implants for expansion of the capsular bag after cataract extraction. They are made from one piece of PMMA (polymethyl methacrylate). The Johnson & Johnson Vision injector is an auxiliary device, which simplifies the implantation of the CTR.

The eyelet of the CTR is already hooked in the injector and can be loaded in the injector immediately after removal from its package. It is then ready for implanting.



1. Check the details on all labels with regard to type, specific details and expiration date before opening the blister packs

2. Under aseptic conditions, remove the StabilEyes Preloaded CTR as follows:

- Open the outer blister pack at the points indicated and remove the primary container,

- Carefully pull back the seal of the second blister pack (primary container),

- Carefully remove the StabilEyes Preloaded CTR with the re-attached ring.

3. Inspect the injector with the preloaded CTR before using, only use an undamaged injector and CTR.

4. The correct handling of the StabilEyes Preloaded CTR is shown in the directions folder. Please note: The clip on the injector plunger may only be removed once the implant has been fully pulled into the injector cannula.

