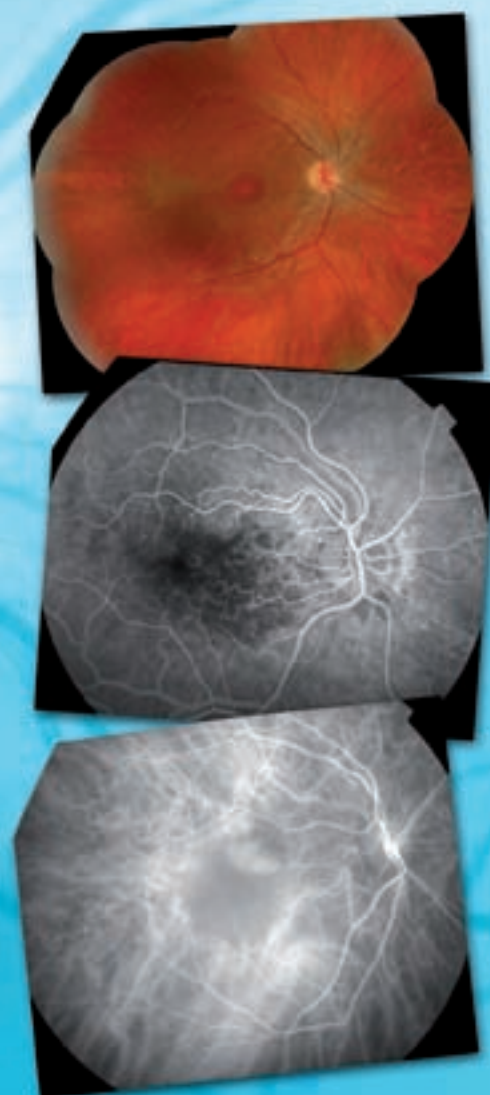


# Retinal Camera TRC-50DX

NEW



CONNECTING VISIONS

# The Gold Standard in Retinal Imaging

## TRC-50DX:

Leading the way in retinal cameras.

In the rapidly developing technology of digital cameras, retinal imaging techniques advance quickly towards higher resolution and newer methods.

New diagnostic modes and procedures require versatility, precision and reliability more than ever before.

The Topcon TRC-50DX, as well as the TRC-50DX(Type IA), improves on the unsurpassed quality of Topcon retinal cameras, incorporating new functions that enhance their versatility and operational ease.

The camera can be used with a variety of photo devices, from 35mm camera backs to super-high resolution digital cameras.



NEW

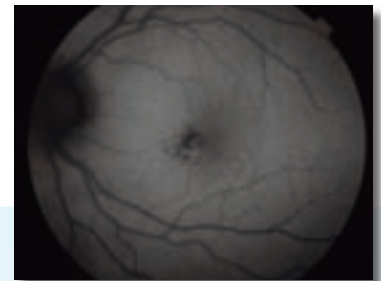
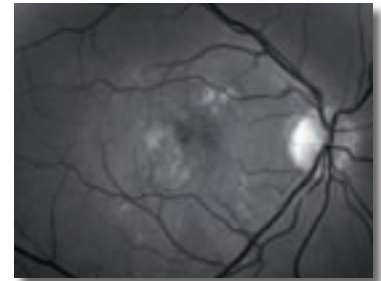
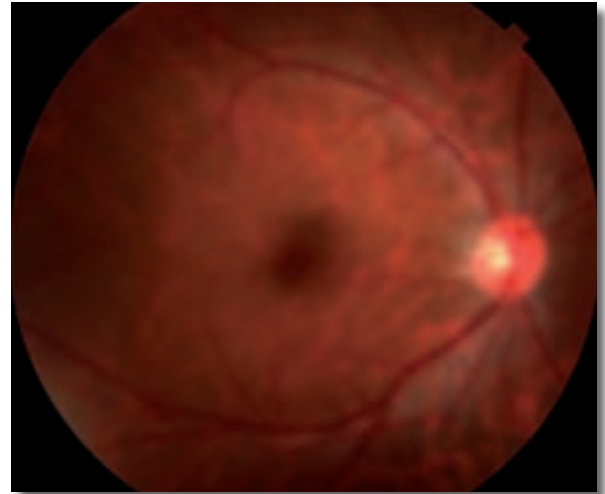


## Retinal camera TRC-50DX / DX (Type IA)

A newly developed control panel, equipped with a touch-screen, allows for a quick and easy change of settings while the Small Aperture function facilitates focusing and enhances sharpness.

Further enhancing its adaptability, the TRC-50DX(Type IA) can perform Auto Fluorescence studies, expanding its diagnostics aptitudes and application availability.

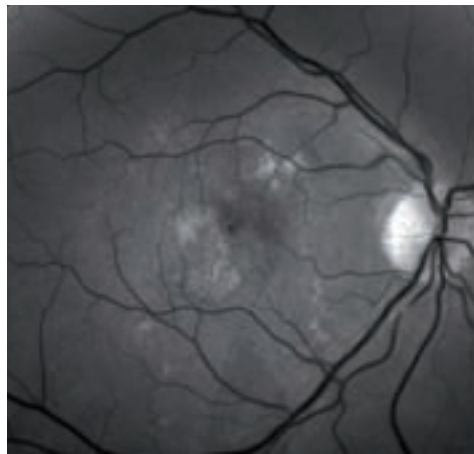
An adaptable filter mechanism lets the user add or exchange filters of his or her choice for different procedures or research projects.



# Features

## Auto Fluorescence

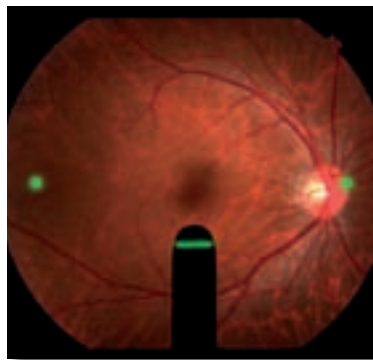
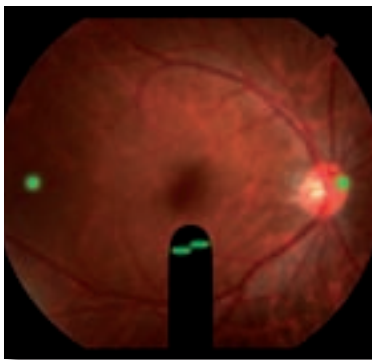
This new diagnostic technique allows for a more in-depth study of the Retinal Pigment Epithelium (RPE) without the need of an injection of a contrast media, enhancing patient comfort and cooperation. This feature is available as the default component in TRC-50DX type IA.



Red Free



Auto fluorescence



## Split Image Focusing

This convenient feature minimizes out-of-focus images and allows even less experienced operators to obtain clear, sharp images with minimal effort.



## Compact Design

Minimized design helps to check patient's reaction and to open eye beyond the unit.

## Flash Intensity Control

Conveniently illuminated for use in subdued light, the flash intensity control has 21 levels and can be used in full or half steps. Sensitive membrane buttons permit total control on the image brightness.



## External Fixation Target

The newly designed fixation target guides the patient's eye to any desired position with a brilliant LED that shines in red or green light, changing automatically according to the study mode.

# Retinal camera TRC-50DX / DX (Type IA)

## Touch Panel Control

Designed with user convenience in mind, the TRC-50DX features a Touch Panel control that allows the operator to change the camera settings with a single touch. All adjustments are at the photographer's fingertips.

## Small pupil mode

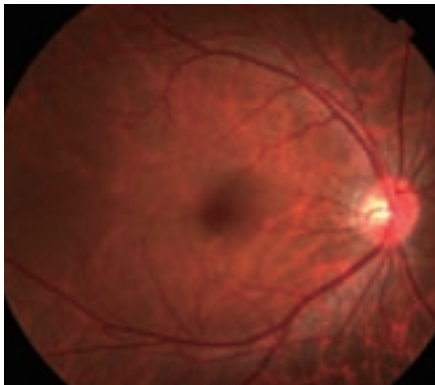
The Small pupil mode permits imaging through pupils as small as 4.5mm diameter.

## Aperture adjustment

The "Small" setting of the aperture produces a sharper, easier to focus image with enhanced depth of field. It offers remarkable effect in peripheral photography. Furthermore, its enhanced range of focus helps when using high resolution camera which requires severe focus aligning.

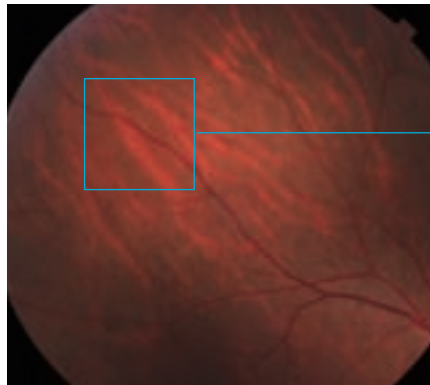


## Off-focus

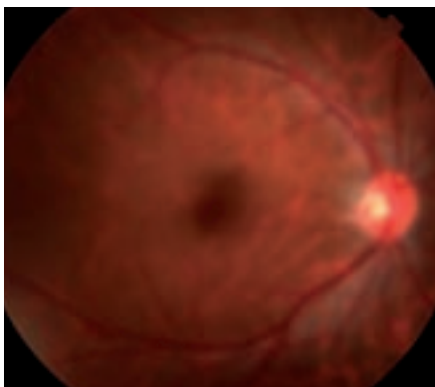
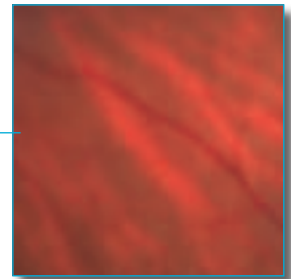


Small

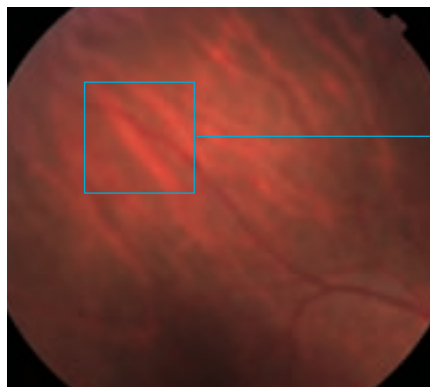
## Peripheral



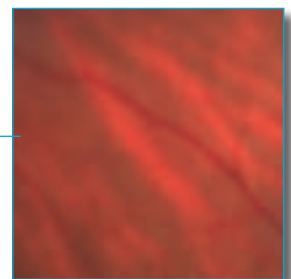
Small



Large



Large



# Optional Accessories

## Relay Lens

### OR-2 (1X Relay Lens)

The OR-2 enables conventional color photography and fluorescein angiography on film.



### Double Mount TV Relay Lens

Various double relay lenses meet the requirement of attaching CCD cameras to the top part.



### Triple Mount TV Relay Lens

Triple mount TV relay lenses enable integration of 3 CCD cameras to the top part.

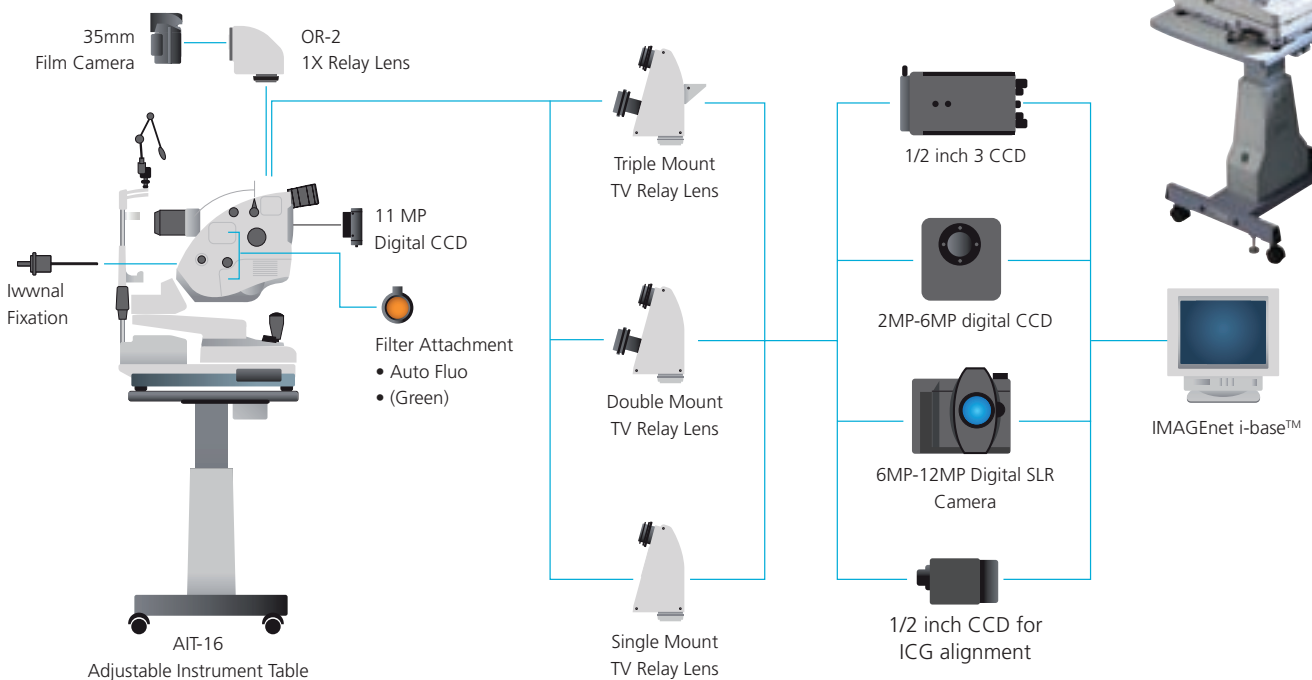


### Single Mount TV Relay Lens

Single mount TV relay lenses make up simple and economical systems for color photography and fluorescein angiography.



## Retinal camera TRC-50DX:



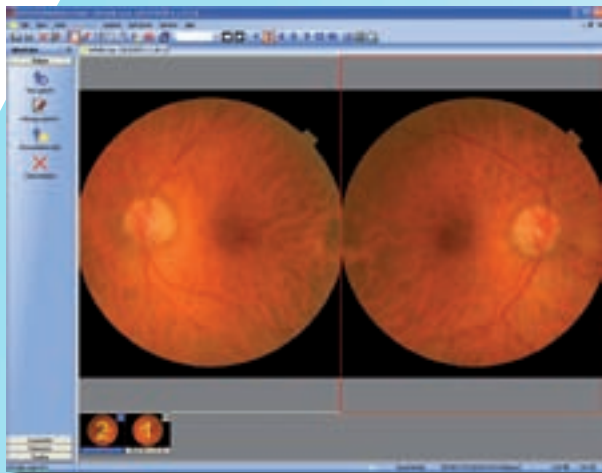
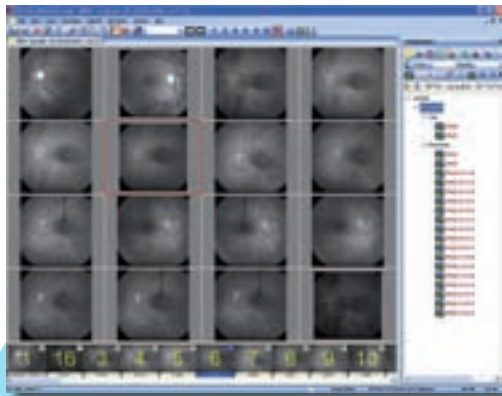
\*All cameras are other manufacturer's products.

# Retinal camera TRC-50DX / DX (Type IA)

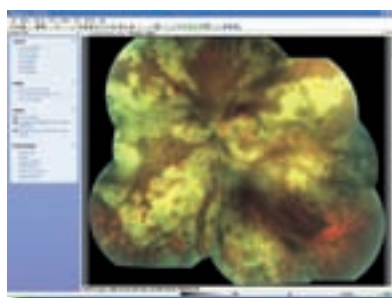
## IMAGEnet i-base™ Digital Imaging System

Using comprehensive software for capturing, processing, archiving and consulting, IMAGEnet I-base expands the abilities of the TRC-50DX into a digital imaging analysis system for clinical applications. IMAGEnet I-base detects the filter settings and CCD camera in use from the TRC-50DX and sets the capture screen to the corresponding procedure automatically.

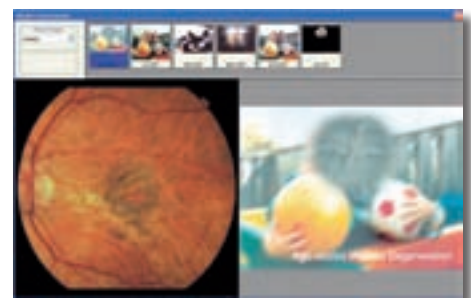
A variety of options conveniently priced fit the needs of the single practitioner or the multi-discipline health institution with powerful diagnostic tools. The smart electronics of the TRC-50DX and the convenience of USB connections provide a seamless interface with any of the IMAGEnet I-base programs.



PDT



Auto Mosaic



Patent consultation

## Specifications

Capture mode	TRC-50DX	TRC-50DX (type IA)
Auto Fluorescence	Color/Red-Free/FA	Color/Red-Free/FA/ICG/Auto Fluo
Angle of Coverage	OPTION*	O
Photographic Magnifications	50°/35°/20°	
Working Distance	With 35mm camera at zero diopter; 1.84x at 50°, 2.45x at 35°, 4.28x at 50°	
Diopter Compensation	39 mm	
Range for patient's eye	0 -10D~+6D - -23D~-9D + +5D~+23D	
Diopter Compensation at finder	A +22D~+41D	
Split Focus	-6D~+5D	
Internal Fixation	0°	
Counter	Option*	O
Optical Head tilt	0°	
Light Source	Up 15° / Down 10°	
Power supply	For photography: Max 300WS Xenon	
Power Consumption	100-120 V, 200-240V / 50-60 Hz	
Dimensions / Weight	1500VA	
	340 mm(W) x 505 mm(D) x 506-715mm(H) / Aprox. 35 Kg	

\* Is not available in all countries

## Optional Accessory



Topcon IS-425 table



Adjustable Instrument Table AIT-16



TOPCON CORPORATION



TOPCON CORPORATION



Certificate No. JF00118661QA  
TOPCON CORPORATION

\* Subject to change in design and/or specifications without advanced notice.

**IMPORTANT** In order to obtain the best results with this instrument, please be sure to review all user instructions prior to operation.

### Topcon Europe Medical B.V.

Essebaan 11; 2908 LJ Capelle a/d IJssel; P.O. Box 145;  
2900 AC Capelle a/d IJssel; The Netherlands  
Phone: (+31) 10 4585077; Fax: (+31) 10 4585045  
E-mail: medical@topcon.nl; www.topcon.eu

### Topcon Deutschland GmbH

Giesslerallee 31; D-47877 Willich, Germany  
Phone: (+49) 2154 885 0; Fax: (+49) 2154 885 111  
E-mail: info@topcon.de; www.topcon.de

### Topcon Scandinavia A.B.

Neongatan 2; P.O. Box 25; 43151 Mölndal, Sweden  
Phone: (+46) 31 7109200; Fax: (+46) 31 7109249  
E-mail: medical@topcon.se; www.topcon.se

### Topcon Danmark

Praestemarksvej 25; 4000 Roskilde, Danmark  
Phone: (+45) 45 327500; Fax: (+45) 46 327555  
E-mail: topcon@topcondanmark.dk  
www.topcondanmark.dk

### Topcon España S.A.

HEAD OFFICE; Frederic Mompou, 5; 08960 Sant Just  
Desvern; Barcelona, Spain  
Phone: (+34) 93 4734057; Fax: (+34) 93 4191532  
E-mail: medica@topcon.es; www.topcon.es

### Topcon S.A.R.L.

HEAD OFFICE; 89, rue de Paris; 92585 Clichy, France  
Phone: (+33) 1 41069494; Fax: (+33) 1 47390251  
E-mail: topcon@topcon.fr; www.topcon.fr

### Topcon Italy

Viale dell' Industria 60; 20037 PADERNO DUGNANO;  
(MI) ITALY  
Phone: (+39) 02 9186671; Fax: (+39) 02 91081091  
E-mail: topconitaly@tiscali.it; www.topcon.it

### Topcon (Great Britain) Ltd.

Topcon House; Kennet Side; Bone Lane; Newbury  
Berkshire RG14 5PX; United Kingdom  
Phone: (+44) 1635 551120; Fax: (+44) 1635 551170  
E-mail: info@topcon.co.uk; www.topcon.co.uk

### Topcon Ireland

Unit 69, Western Parkway; Business Centre  
Lower Ballymount Road; Dublin 12  
Phone: (+353) 1460 0021; Fax: (+353) 1460 0129  
E-mail: topcon@indigo.ie